

BAND 1



Q2099/Q1898



ILIV

— CONTRACT TEXTILES —

Helbeck Upholstery Print Collection



Upholstery



Up to
50,000
Rubs



Stain Resistant



Waterproof



Flame Retardant
To Crib 5



Anti-Bac



Charcoal



Shadow



Noir



Ivory



Putty



Smoke



Hessian



Sand



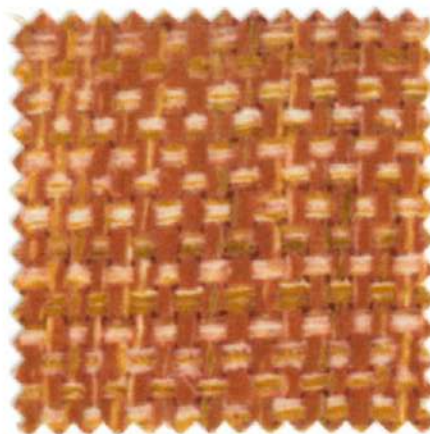
Ruby



Damson



Wine



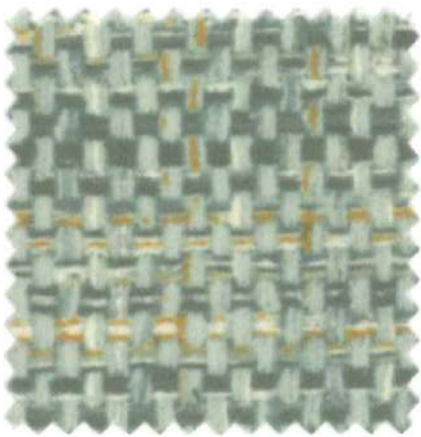
Fire



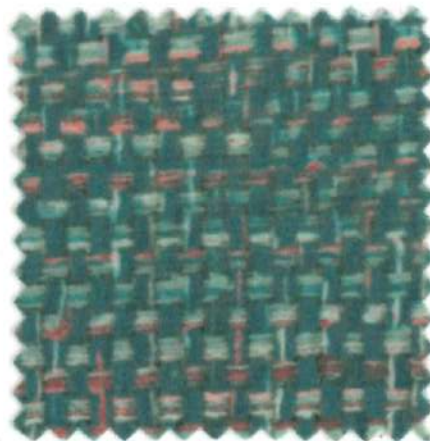
Wedgewood (printed on Q2099)



Wedgewood (printed on Q1898)



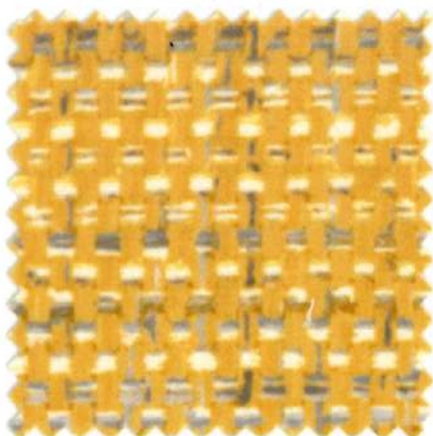
Duck Egg



Teal



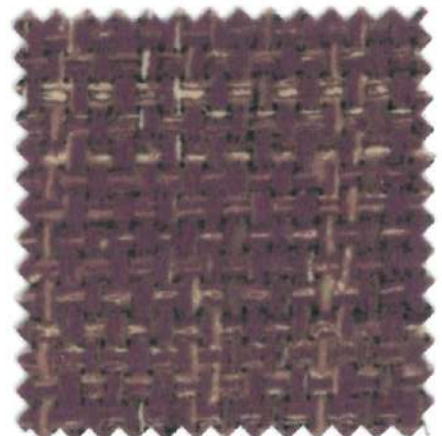
Midnight



Ochre



Olive



Blackberry

PRODUCT SPECIFICATION

Quality	Q2099	Q1898
Description	Suede Effect Printed Upholstery	Twill Printed Upholstery
Composition	Polyester with Anti-Bac, Fluorocarbon, Waterproof and Crib 5 Coating	Polyester with Anti-Bac, Fluorocarbon, Waterproof and Crib 5 Coating
Width	140cm (55")	140cm (55")
Weight	380gm ²	360gm ²
Pattern Repeat	H - 69cm V - 64cm	
Abrasion	50,000+ Cycles	50,000+ Cycles
Waterproof	BS 3424 - Hydrostatic head in excess of 1m	
Anti-Microbial	Will not support microbial and fungal growth	
Flame Retardant	BS 7176 Medium Hazard Ignition source 0, 1 & 5 when tested over CMHR 35 foam BS5852 Crib 5 EN1021 (Parts 1 & 2)	
Additional Features	Stain Resistant Finish	
Application	Waterproof Upholstery for Contract and Heavy Domestic Use.	
Cleaning	<ul style="list-style-type: none"> • Remove spillages promptly (within 15 minutes) with an absorbant dry cloth. • Vacuum and wipe clean regularly with a damp cloth to remove dust particles and prevent build up of soiling. • For heavy soiling use a mild soap and water, ensuring that cleaning product residues are fully rinsed out as they can inhibit the stain repellent in the fabrics. • Clean and care for your upholstery on a regular basis and it will maintain its condition and appearance. • Do not machine wash, fully immerse, dry clean or apply other chemicals / stain removers. 	
Additional Info	Any of our print designs can be printed onto these base cloths.	

Whilst we endeavour to ensure that every batch matches our swatches, variations do occur. If you require an exact match to a previous order please make the sales team aware at the time of ordering and if necessary please send a cutting for us to match to.

ILIV Contract Textiles
SMD Group
Pittman Way, Fulwood, Preston
Lancashire, PR2 9ZD

T: +44 (0) 1772 651199
F: +44 (0) 845 519 7736
E: sales@smd-textiles.co.uk

www.i-liv.co.uk

ILIV

— CONTRACT TEXTILES —