

CCFI

COMPLETE CONTRACT FURNITURE INSTALLATION LTD

Specialist Chair Catalogue 2023

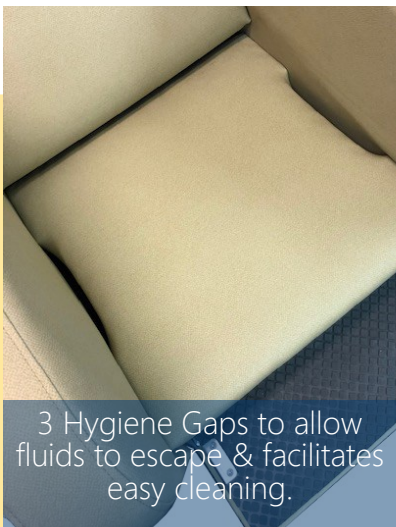




Specialist Seating

Transfer Chairs

Day Care Chairs provide maximum comfort for long term seating and ease of mobility
Specialist seating without a “medical” appearance, available in a wide variety of attractive fabrics.



3 Hygiene Gaps to allow fluids to escape & facilitates easy cleaning.



- Push Bar on the back
- 20 Degree Tilt on Seat
- Drop Down Footplate
- 4 Braked Swivel Castors
- 3 Hygiene Gaps to allow fluids to escape & facilitates easy cleaning.

Sorrento

Sorrento Transfer Chair

OH 102cm OW 69cm

SH 51cm SW 48cm SD 51cm



- Push Bar on the back
- Drop Down Footplate
- 4 Braked Swivel Castors
- 3 Hygiene Gaps to allow fluids to escape & facilitates easy cleaning.

Paris

Paris Transfer Chair

OH 102cm OW 70cm

SH 50cm SW 48cm SD 51cm



Specialist Seating

Day Care Chairs

Day Care Chairs provide maximum comfort for long term seating and ease of mobility
Specialist seating without a “medical” appearance, available in a wide variety of attractive fabrics.



Sorrento

Sorrento Day Care Chair

OH 102cm OW 69cm

SH 51cm SW 48cm SD 51cm

REFLEXION by **vitafoam**

Vitafoam Reflexion pressure reducing cushions in seat and backrest –combined with stretch fabric to provide excellent comfort for extended seating periods.

- Push Bar on the back
- 20 Degree Tilt on Seat
- Drop Down Footplate
- 4 Braked Swivel Castors
- 3 Hygiene Gaps to allow fluids to escape & facilitates easy cleaning.



Chillerton

Chillerton Day Care Chair

OH 102cm OW 71cm

SH 51cm SW 48cm SD 51cm

Chillerton Stool



Norton

Norton Day Care Chair

OH 102cm OW 69cm

SH 51cm SW 48cm SD 51cm



Warwick

Warwick Day Care Chair

OH 102cm OW 71cm

SH 51cm SW 48cm SD 51cm



Tilt-in-Space Rise & Recliners

including *Single, Dual or Manual*



Liberty Recliner

Tilt in Space Single, Dual or Manual
OH 104cm OW 86cm
SH 48cm SW 51cm SD 48cm

Manual

Single Motor

Dual Motor

- Tilt-in-space
- 7 Year Warranty –On Actions
- Detachable Overlay
- Hundreds of Fabrics
- Optional pressure reducing Seat Foam



Sunbury Standard Recliner

Tilt in Space Single, Dual or Manual
OH 102cm OW 84cm
SH 46cm SW 51cm SD 48cm

Manual

Single Motor

Dual Motor



Sunbury Petite Recliner

Tilt in Space Single, Dual or Manual
OH 102cm OW 79cm
SH 46cm SW 46cm SD 48cm

Manual

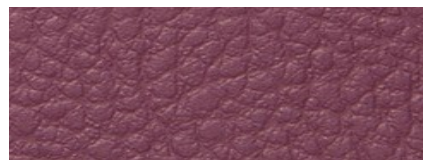
Single Motor

Dual Motor

Popular Fabric for Day Care Chairs

Vyflex is a Multi-Directional Stretch Fabric for Use in Pressure Relief Seating

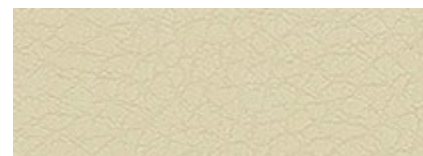
VYFLEX Plus (Inside)



624 Mulberry / 127 Lilac



314 Mustard / 321 Wheat



823 Chablis / 823 Chablis



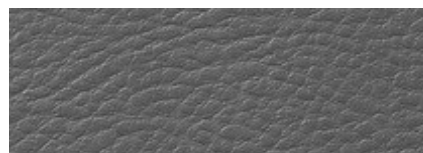
116 Navy / 116 Navy



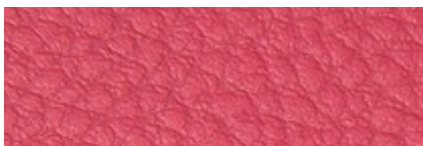
151 Teal / 129 Ocean



858 Cobble / 835 Hessian

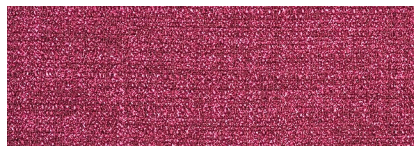
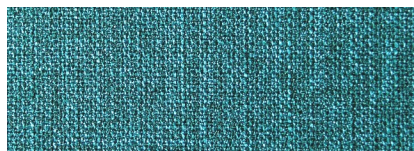


904 Pewter / 911 Steel



609 Rose / 648 Fig

Highland (Outside)



Martindale
abrasion



REACH
Compliant



Waterproof



Anti-bacterial
Anti-Microbial



CRIB 5



Easy to Clean

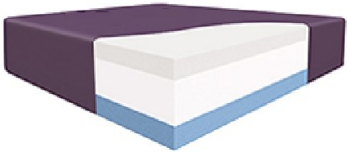
**Please Note: This is intended as a fabric guide only, and colours depicted here should not be relied upon as a perfect match to the actual fabrics . Please ask for a colour card if specific colour matching is required*

Pressure Reducing Seat Cushions



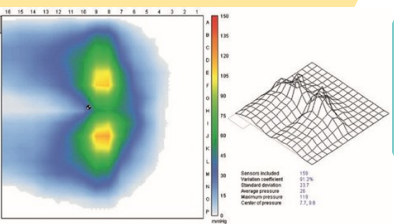
Prime Seat Cushions

Paramount Seat Cushions

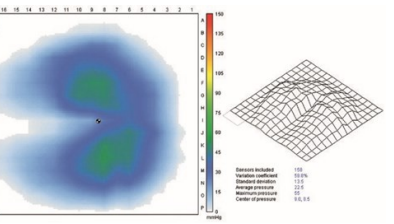


Prestige Seat Cushions

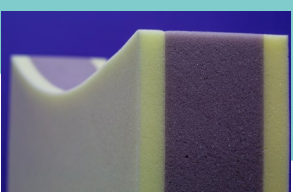
Conventional Seat Cushion



Reflexion Seat Cushion



Reflexion from Vitafoam.uk



Visco-Elastic Cellular Polymer

Footstools



Brandon

Overall height 36cm
Overall width 41cm
Overall depth 30cm



Straight Leg

Overall height 36cm
Overall width 41cm
Overall depth 30cm



Queen Anne

Overall height 28cm
Overall width 30cm
Overall depth 41cm



Nursing

Overall height 54cm
Overall width 38cm
Overall depth 38cm



Sloping

Overall height 46cm
Overall width 43cm
Overall depth 58cm



D Shaped

Overall height 41cm
Overall width 51cm
Overall depth 38cm

Bean Bag Chair & Bean Bag

- Double Zip / Tamper proof to prevent bean spillage
- Breathable Base Cloth



Bariatric Chairs



Chester



Somerset



Wentworth Dining Chair



Barbrook



All Bariatric Chairs are designed to be Wider, Stronger and more Resilient than Standard Size Chairs.

Reinforcement allows for Bariatric Chairs to bear Weights of up to 50 Stone and can be manufactured up to a Width of 81cm which will allow for extra comfort for users.

All Bariatric Chairs are made to individual Sizes and specifications.

- Variable Seat Heights
- Any Fabric
- Made in UK
- 3 Wood Colours-
Natural, Oak, Dark Walnut

CCFI

COMPLETE CONTRACT FURNITURE INSTALLATION LTD



01489 854 402



info@ccfi.co.uk



www.ccfi.com



Head Office & Showroom
Unit 24 Park Gate Business Centre
Chandlers Way, Park Gate
Hampshire, SO31 1FQ

Manufacturing
Unit 22 Park Gate Business Centre
Chandlers Way, Park Gate
Hampshire, SO31 1FQ