

FINSBURY

Part of the
HOXTON
Collection

Panaz[®]



Upholstery



Flame Retardant



Waterproof



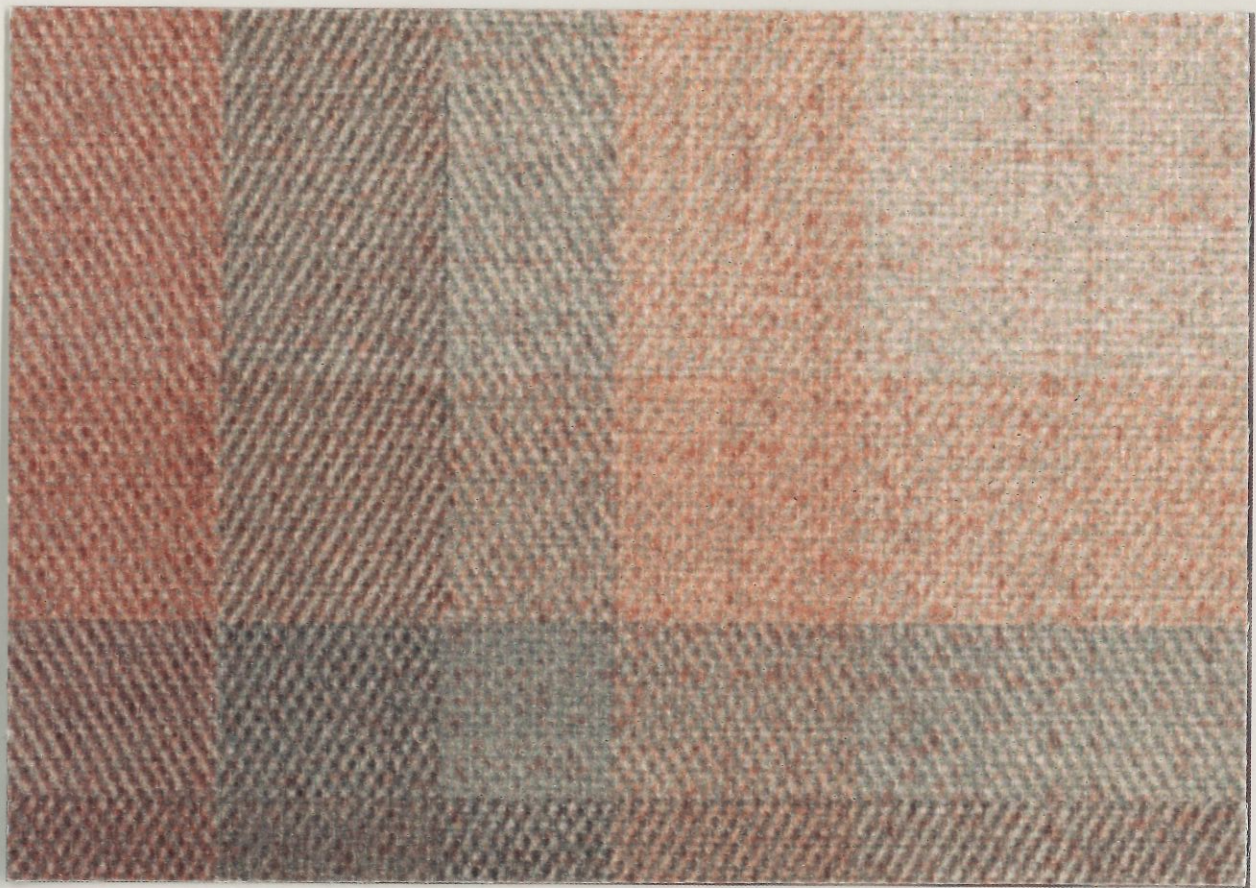
Anti-Microbial



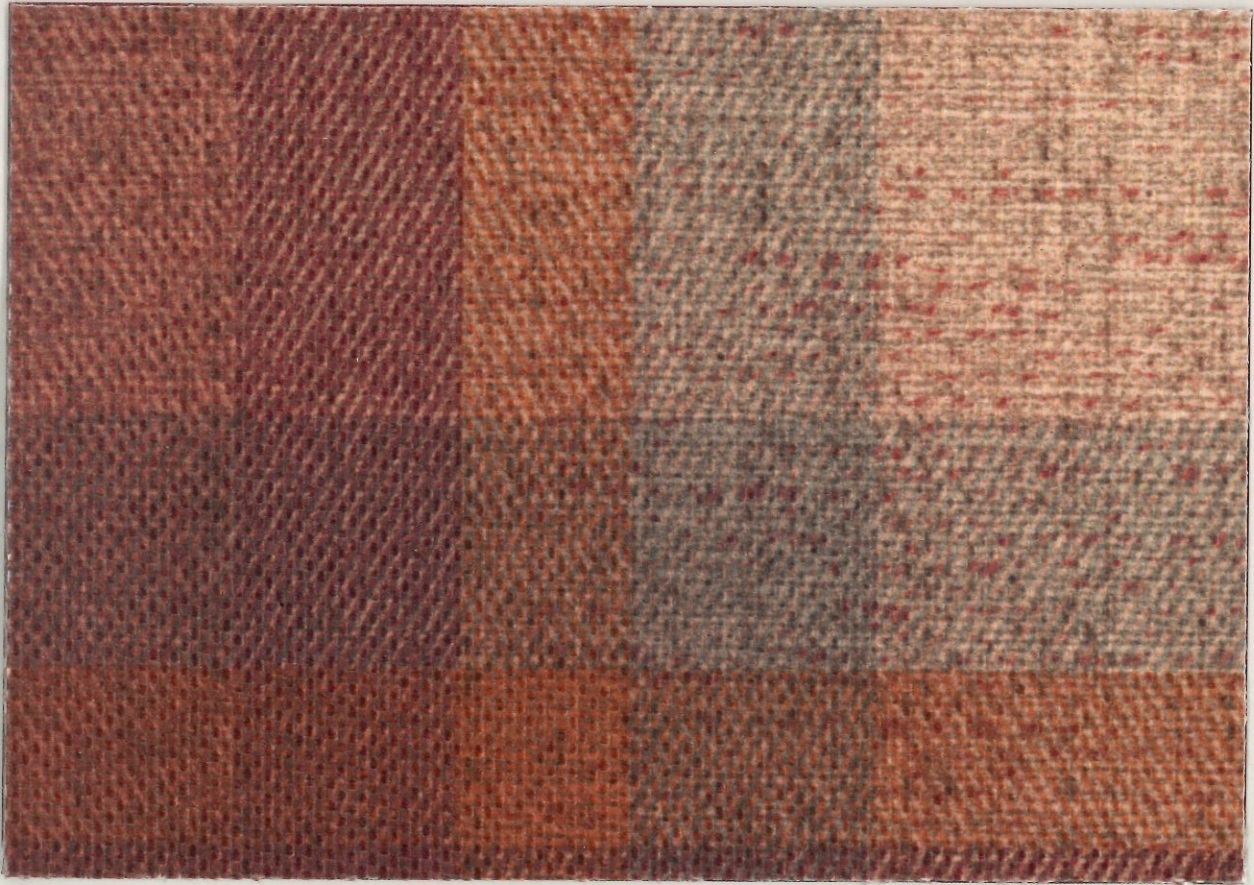
Stain Resistant



Breathable



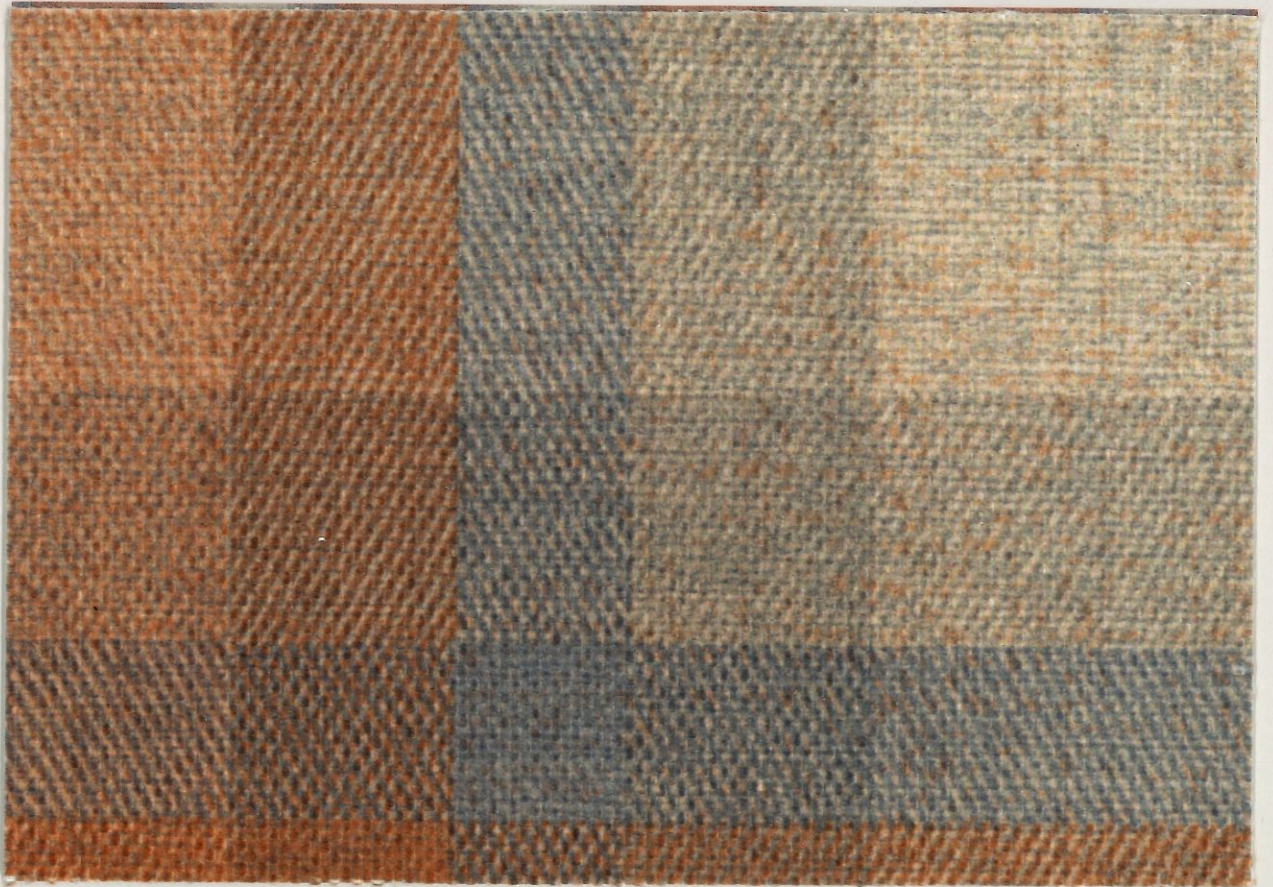
Finsbury
674 Blush/Mink



Finsbury
467 Bordeaux



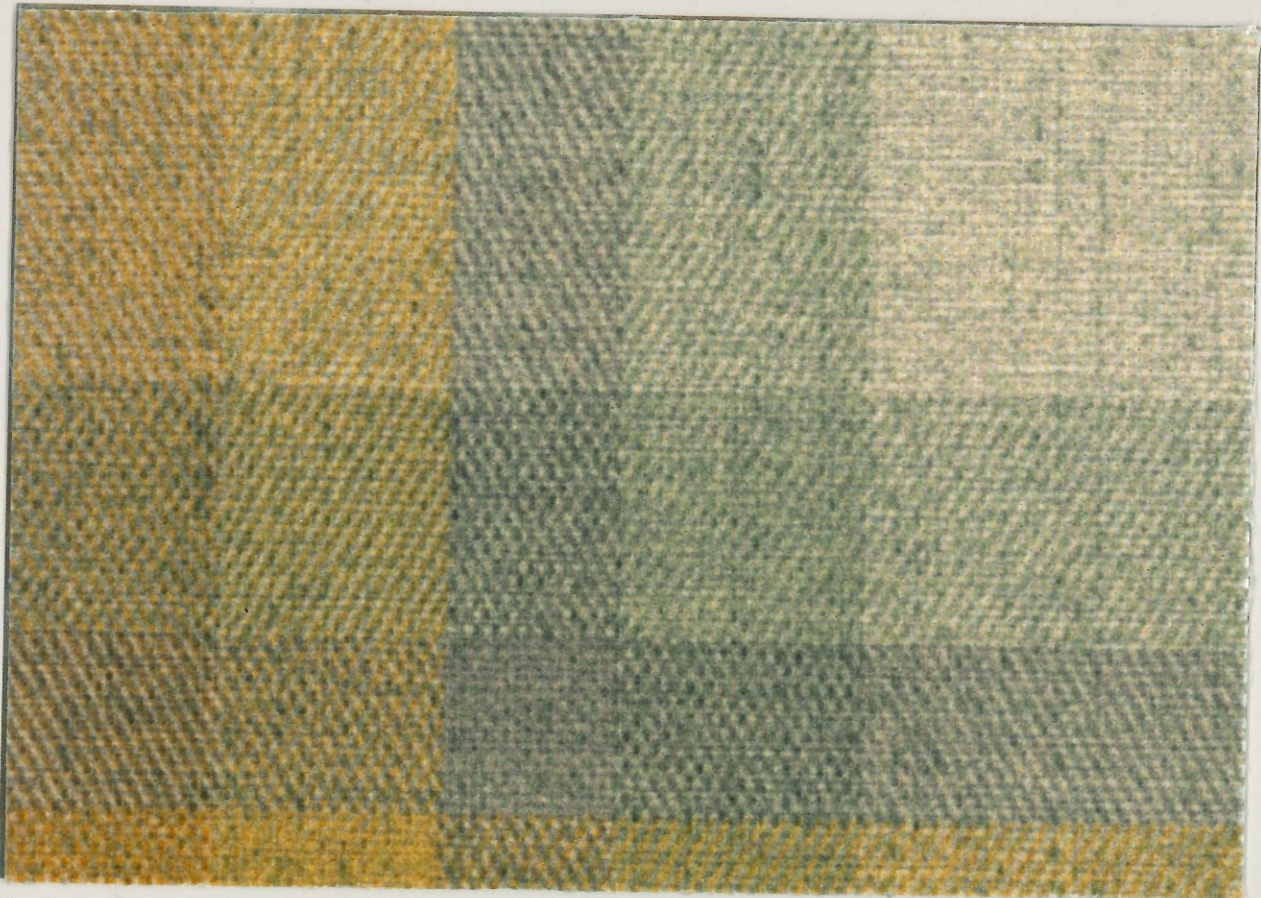
Finsbury
692 Heather



Finsbury
491 Terracotta/Steel

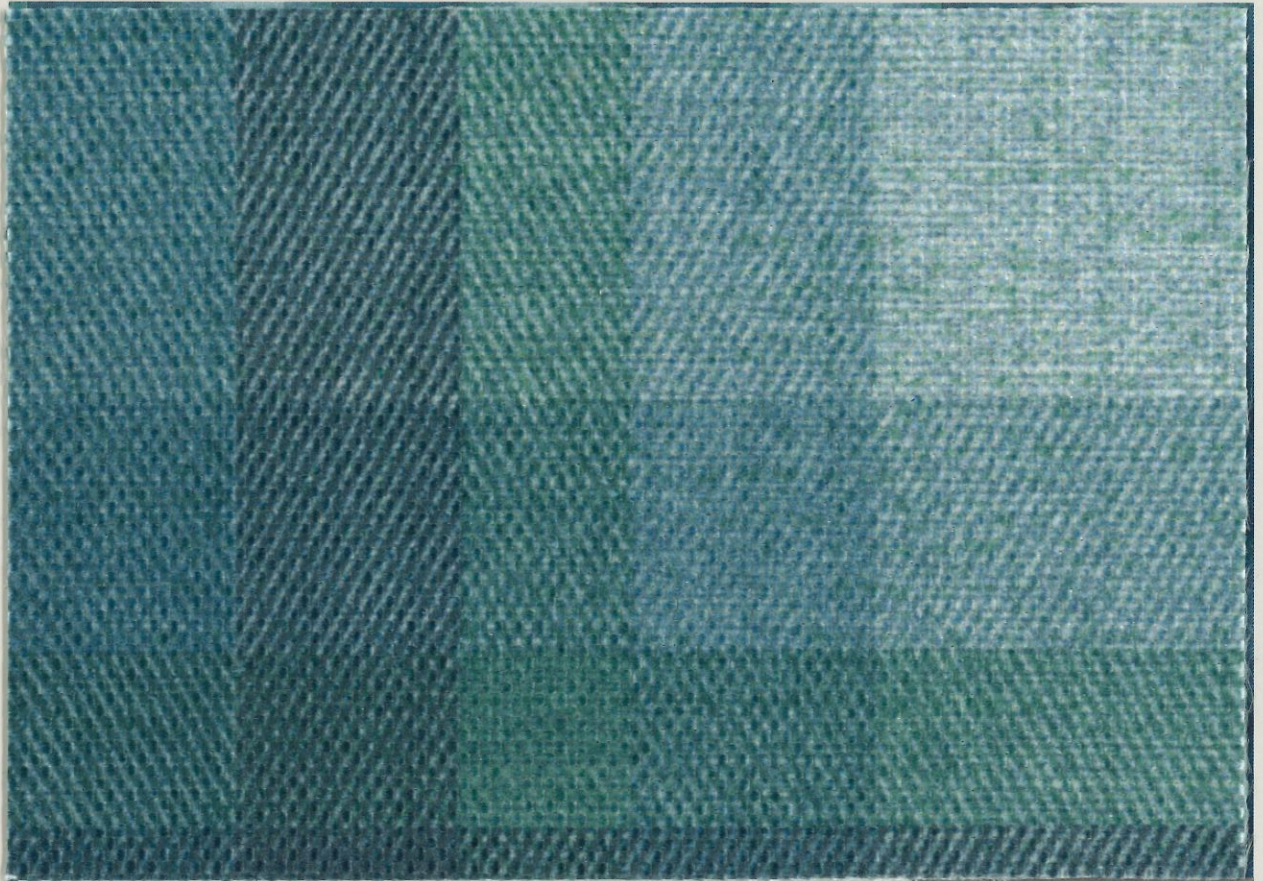


Finsbury
166 Aqua/Lime



Finsbury
320 Gold/Green

Height Repeat: Approx. 35cms (13.8)
Side Repeat: Approx. 34.3cms (13.5")



Finsbury
110 Pacific

Basecloth: Woolton Plus (295)

Lift for full width image



Finsbury
110 Pacific

Basecloth: Panvelle Luxe (340)

FINSBURY

QUALITY	COMPOSITION	APPLICATION	WEIGHT	WIDTH	ABRASION	COLOUR FASTNESS TO LIGHT	COLOUR FASTNESS TO RUBBING	WATERPROOF	FLAMMABILITY RATINGS					
									IMO: FTP 2010 Part 8	CAL TB 116 & 117	NFPA 260 USA	B1 Germany	EN 1021-1/2	BS5852 : 2006 Ignition Source 5
Woolton Plus 295	100% Polyester with Microporous Film and FR Laminate	Contract & Heavy Domestic Upholstery	Approx 465g/m ² +/-5%	Approx 138cms (54.3")	50,000+ Martindale Rubs	Grade 5	Wet: 4-5 Dry: 4-5	20m	•	•	•	•	•	•
Panvelle Luxe 340	100% Polyester with Microporous Film and FR Laminate	•	Approx 432g/m ² +/-5%	Approx 138cms (54.3")	45,000 Martindale Rubs 50,000 Wyzenbeek D.R.	Grade 5+	Wet: 4-5 Dry: 4-5	5m	•	•	•	•	•	•
Highland Print 010	100% Polyester with Microporous Film & FR Backcoating	•	Approx 375g/m ² +/-5%	Approx 138cms (54.3")	40,000+ Martindale Rubs 70,000 Wyzenbeek D.R.	Grade 5	Wet: 4-5 Dry: 5	4m	•	•	•	•	•	•

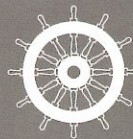
<p>PRODUCT PROPERTIES</p>		<p>BEAUTIFUL, DURABLE & BREATHABLE</p> <ol style="list-style-type: none"> Anti-Microbial shield^{plus} Protection - Permanently inhibits the broadest spectrum of microbes (even C diff spore) and prevents nasty odours. Stain Resistant - A C6 fluorocarbon technology combining effectiveness with environmental consideration. Fabric - Comfortable but durable to suit the most extreme environments. Waterproof film - Hydrostatic head test exceeds standard requirement of 1 metre. Flame Retardant - To cigarette, match, crib 5 and virtually all international standards.
<p>RECOMMENDED CLEANING</p>	<ul style="list-style-type: none"> ✓ Vacuum or wipe clean routinely with a microfibre cloth lightly dampened with cold water only. ✓ Soak up spillages as soon as possible with an absorbent dry cloth to prevent staining. ✓ Remove body fluids and extreme soiling immediately (within 15 minutes) with cold water then apply approved infection control protocol: Haz Tabs, Chlor Clean or Shield Plus etc. As the concentration of bleach can vary greatly among proprietary brands we recommend these be avoided. Remove product residues and then dry with a clean absorbent cloth. ✗ Do not steam clean - heat seals in stains. ✗ Do not tumble dry. ✗ Do not dry clean. ✗ Do not fully immerse in water. ✗ Do not apply solvents, alcohol or any other chemical cleaners. 	
<p>CONTINUITY</p>	<p>Although every effort is made to ensure that fabrics ordered match the colours in this pattern card, slight variations may occur from batch to batch.</p>	
<p>Please note Panaz reserve the right to update product specification at their discretion.</p>		

© Panaz own the copyright of all designs shown in this pattern card, any infringement of which will be actioned by law.



Panaz®

For further information please visit www.panaz.com



BV 2690/20
Highland Print Only

Head Office
Panaz Ltd.
Bentley Wood Way
Hapton, Burnley
Lancashire. BB11 5ST
England
Tel: +44 (0)1282 696969
email: sales@panaz.co.uk

Panaz Europe Ltd.
V. Mallitah
Mediterranean Street
The Village
St. Juliens
STJ 1870
Malta
Tel: 00356-27780052
email: admin@panaz.com

Panaz USA Inc.
Access Office Business Center
8801 Fast Park Drive
Suite 301
Raleigh, NC 27617
USA
Tel: +1 919 747 8211
Fax: +1 919 870 9045
email: sales@panaz.com