

HARROW & KENSAL

Part of the
DALSTON
Collection

Panaz[®]



Upholstery



Flame Retardant



Waterproof



Anti-Microbial



Stain Resistant



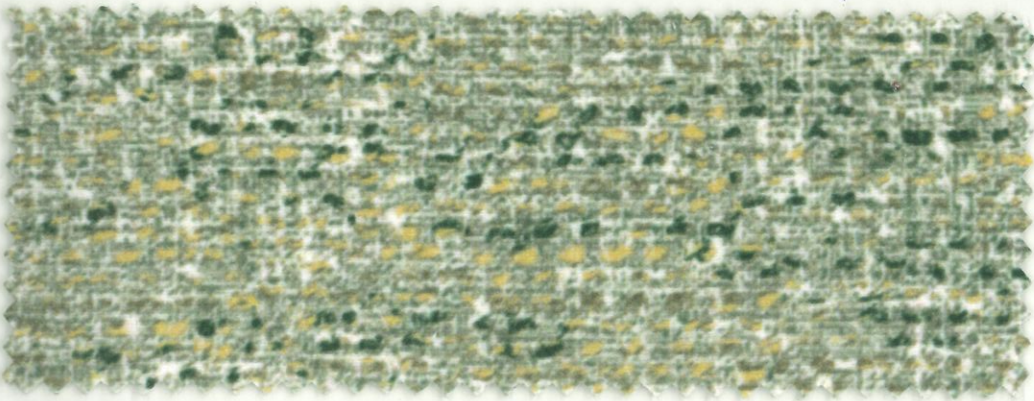
Breathable



Kensal
823 Chablis



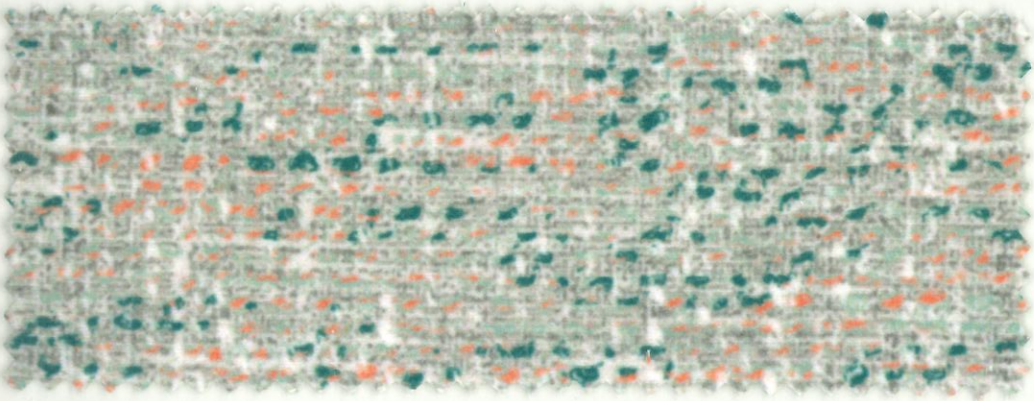
Balham
823 Chablis



Kensal
256 Willow/Olive



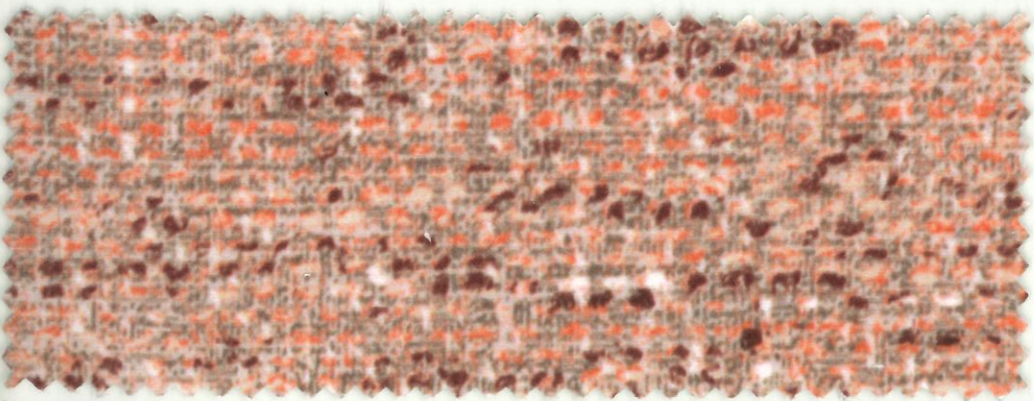
Balham
243 Cactus



Kensal
151 Teal



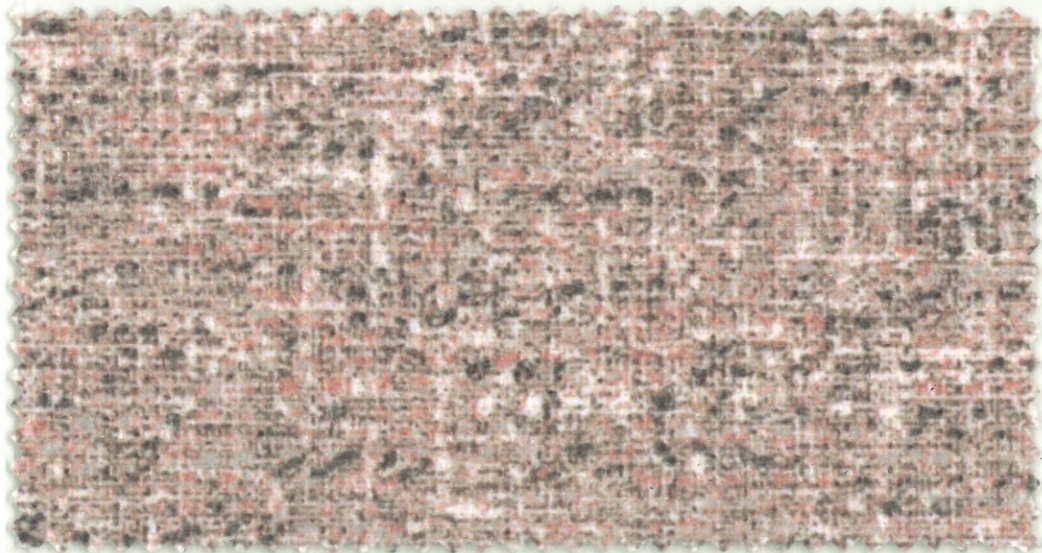
Balham
151 Teal



Kensal
602 Peach

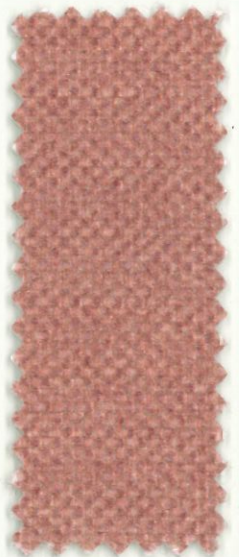


Balham
404 Henna

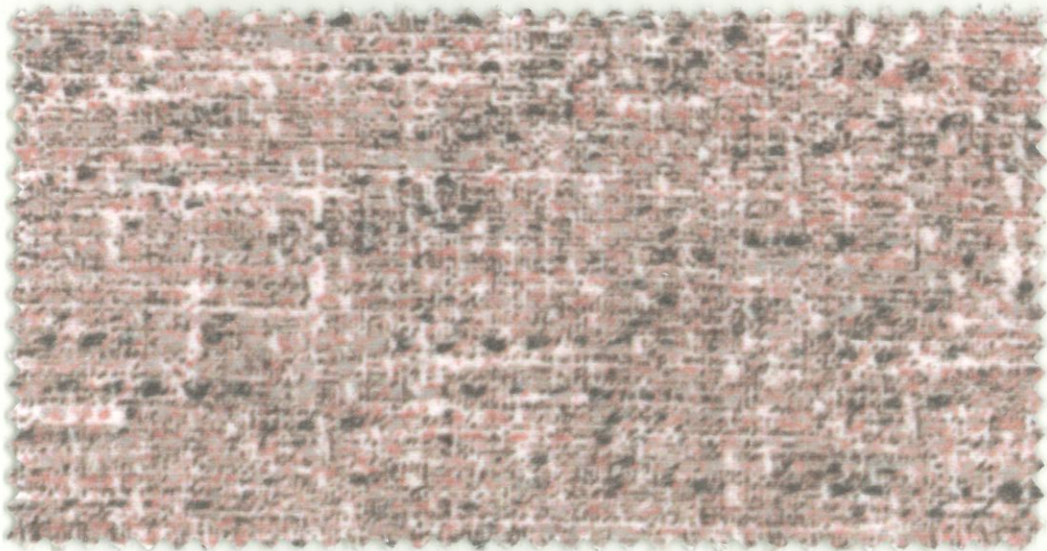


Kensal
650 Pink/Grey

Basecloth: Woolton Plus (295)

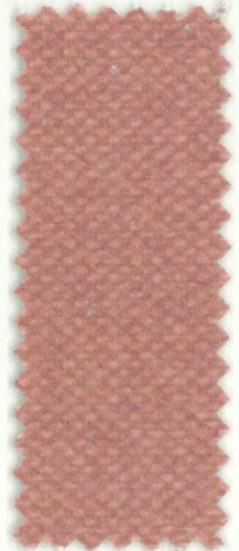


Balham
618 Blush

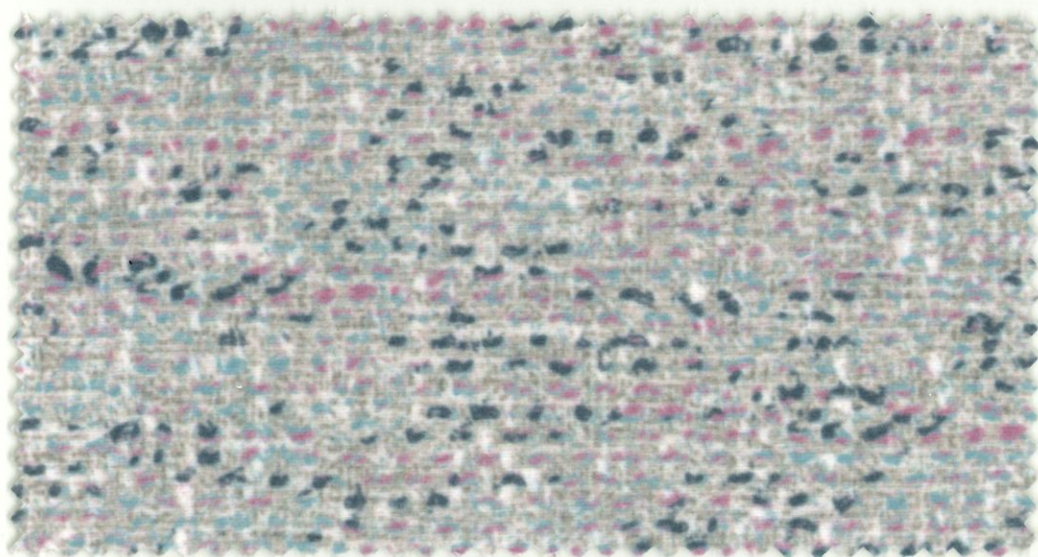


Kensal
650 Pink/Grey

Basecloth: Panvelle Luxe (340)



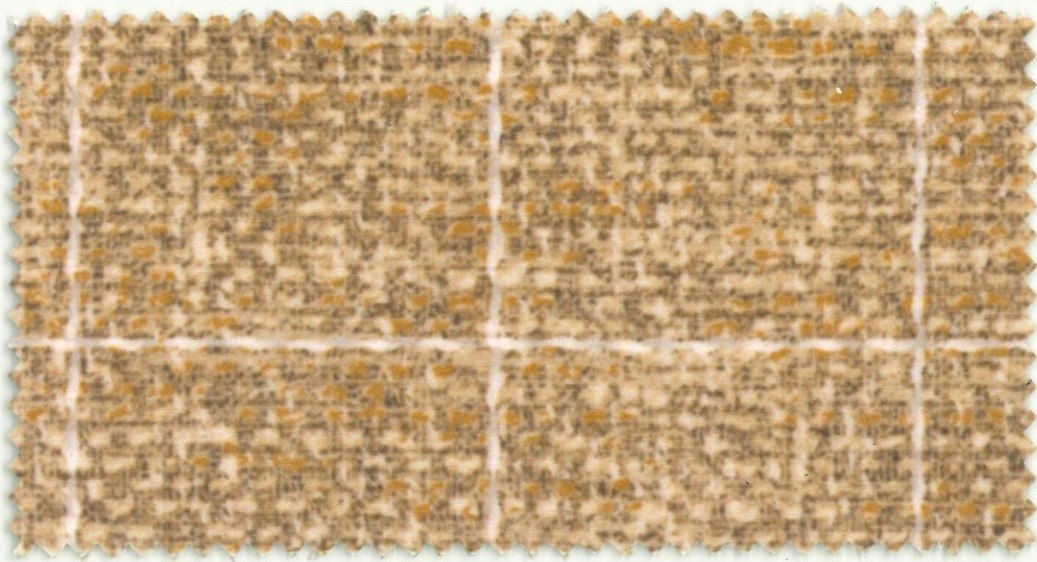
Balham
618 Blush



Kensal
109 Sky/Indigo



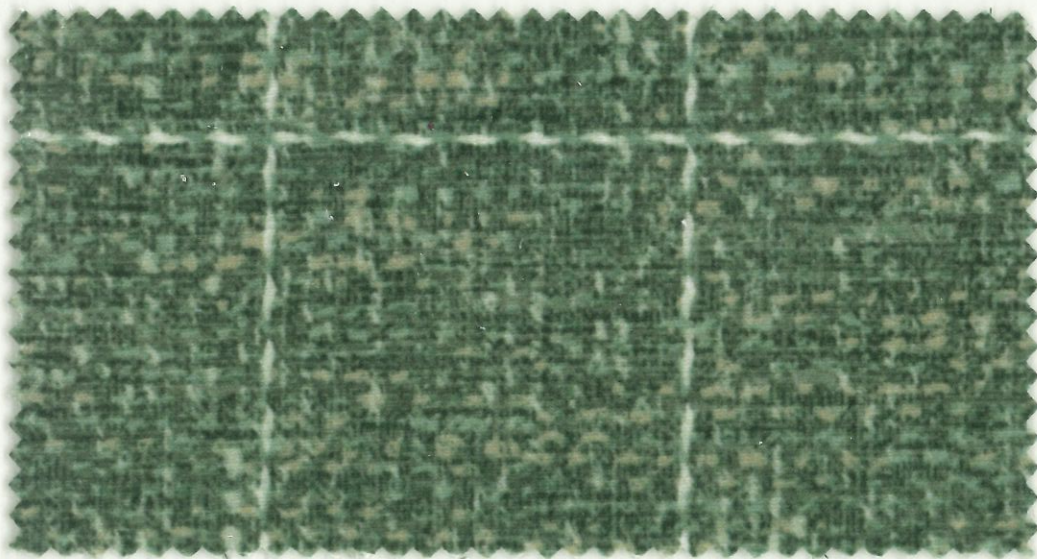
Balham
134 Sky



Harrow
834 Honey



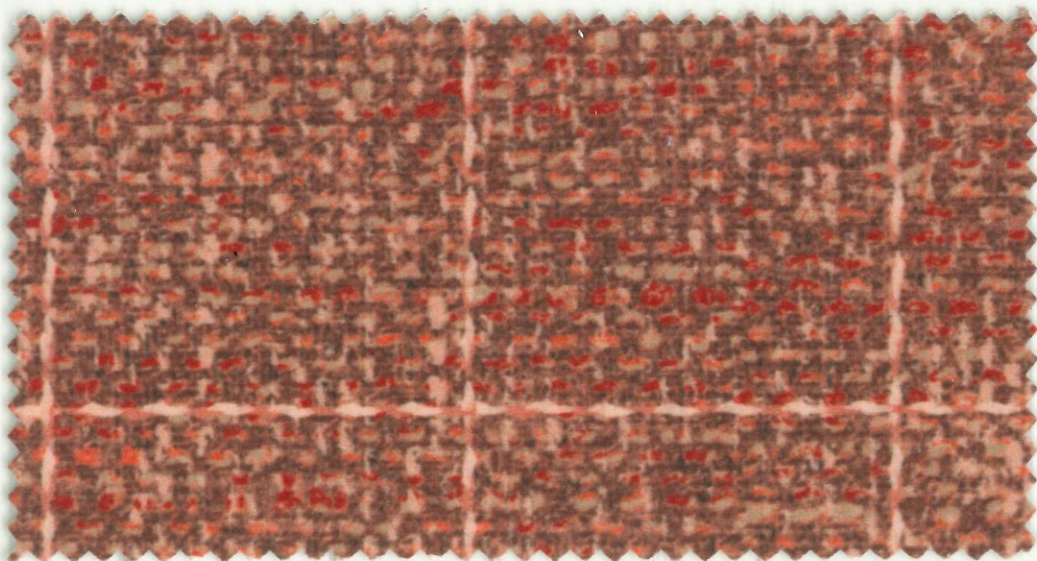
Balham
300 Gold



Harrow
211 Spruce



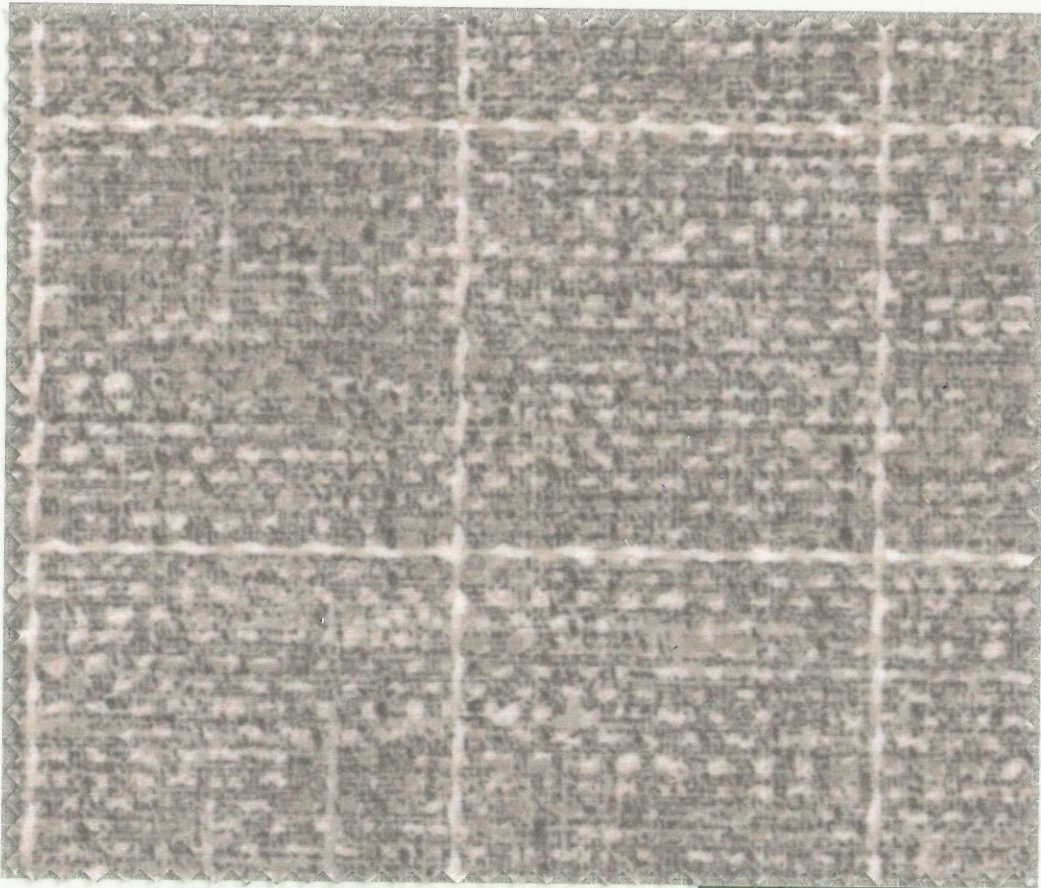
Balham
211 Spruce



Harrow
404 Henna



Balham
411 Spice



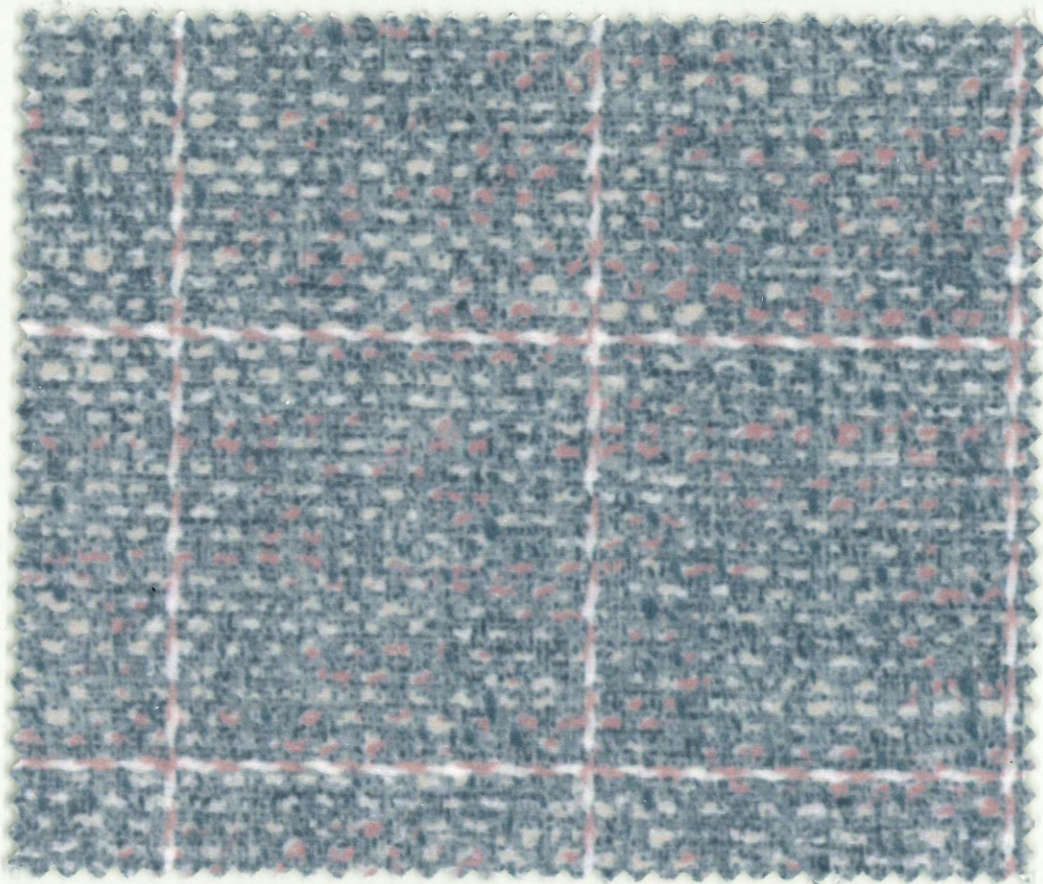
Harrow
925 Putty

Height Repeat: Approx. 35cms (13.8)
Side Repeat: Approx. 34.3cms (13.5")

Lift for full width image



Balham
858 Cobble



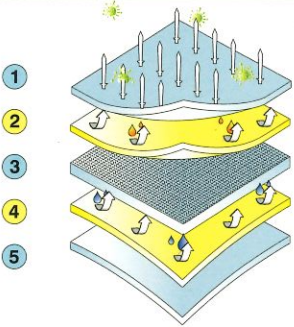
Harrow
134 Sky



Balham
646 Peony

HARROW & KENSAL

QUALITY	COMPOSITION	APPLICATION	WEIGHT	WIDTH	ABRASION	COLOUR FASTNESS TO LIGHT	COLOUR FASTNESS TO RUBBING	WATERPROOF	FLAMMABILITY RATINGS						
									IMO: FTP 2010 Part 8	CAL TB 116 & 117	NFPA 280 USA	B1 Germany	EN 1021-1/2	BSS852: 2006 Ignition Source 5	BS7176: Medium Hazard
Panvelle Luxe™ 340	100% Polyester with Microporous Film and FR Laminate	Contract & Heavy Domestic Upholstery	Approx 432g/m ² +/-5%	Approx 138cms (54.3")	45,000 Martindale Rubs 50,000 Wyzenbeek D.R.	Grade 5+	Wet: 4-5 Dry: 4-5	5m	•	•	•	•	•	•	
Woolton Plus™ 295	100% Polyester with Microporous Film and FR Laminate		Approx 465g/m ² +/-5%	Approx 138cms (54.3")	50,000+ Martindale Rubs	Grade 5	Wet: 4-5 Dry: 4-5	20m	•	•	•	•	•	•	
Highland Print 010	100% Polyester with Microporous Film & FR Backcoating		Approx 400g/m ² +/-5%	Approx 138cms (54.3")	40,000+ Martindale Rubs 70,000 Wyzenbeek D.R.	Grade 5	Wet: 4-5 Dry: 5	4m	•	•	•	•	•	•	

<p>PRODUCT PROPERTIES</p>	 <p>BEAUTIFUL, DURABLE & BREATHABLE</p> <ol style="list-style-type: none"> Anti-Microbial shield^{plus} Protection - Permanently inhibits the broadest spectrum of microbes (even C diff spore) and prevents nasty odours. Stain Resistant - A C6 fluorocarbon technology combining effectiveness with environmental consideration. Fabric - Comfortable but durable to suit the most extreme environments. Waterproof film - Tested to BS3424-26 hydrostatic head test (the standard is one metre.) Flame Retardant - To cigarette, match, crib 5 and virtually all international standards.
<p>RECOMMENDED CLEANING</p>	<ul style="list-style-type: none"> ✓ Vacuum or wipe clean routinely with a microfibre cloth lightly dampened with cold water only. ✓ Soak up spillages as soon as possible with an absorbent dry cloth to prevent staining. ✗ Do not steam clean. ✗ Do not tumble dry. ✗ Do not dry clean. ✗ Do not fully immerse in water. ✗ Do not apply solvents, alcohol or any other chemical cleaners. <p>Panvelle Luxe™ and Woolton Plus™</p> <ul style="list-style-type: none"> ✓ Remove body fluids and extreme soiling immediately (within 15 minutes) with cold water then apply approved infection control protocol: Haz Tabs, Chlor Clean or Shield Plus etc. As the concentration of bleach can vary greatly among proprietary brands we recommend these be avoided. Remove product residues and then dry with a clean absorbent cloth. <p>Highland Print</p> <ul style="list-style-type: none"> ✓ Remove body fluids and extreme soiling immediately (within 15 minutes) with cold water then apply approved infection control protocol: Haz Tabs, Chlor Clean or Shield Plus etc. As the concentration of bleach can vary greatly among proprietary brands we recommend these be avoided. Remove product residues and then dry with clean absorbent cloth. In extreme circumstances, a 10,000 ppm chlorine bleach solution may be used.
<p>CONTINUITY</p>	<p>Although every effort is made to ensure that fabrics ordered match the colours in this pattern card, slight variations may occur from batch to batch.</p>
<p>Please note Panaz reserve the right to update product specification at their discretion.</p>	

© Panaz own the copyright of all designs shown in this pattern card, any infringement of which will be actioned by law.



Panaz®

For further information please visit
www.panaz.com

Head Office
 Panaz Ltd.
 Bentley Wood Way
 Hapton, Burnley
 Lancashire, BB11 5ST
 England
 Tel: +44 (0)1282 696969
 email: sales@panaz.co.uk

Panaz Europe Ltd.
 V. Malltah
 Mediterranean Street
 The Village
 St. Juliens
 STJ 1870
 Malta
 Tel: 00356-27780052
 email: admin@panaz.com

Panaz USA Inc.
 Access Office Business Center
 8801 Fast Park Drive
 Suite 301
 Raleigh, NC 27617
 USA
 Tel: +1 919 747 8211
 Fax: +1 919 870 9045
 email: sales@panaz.com